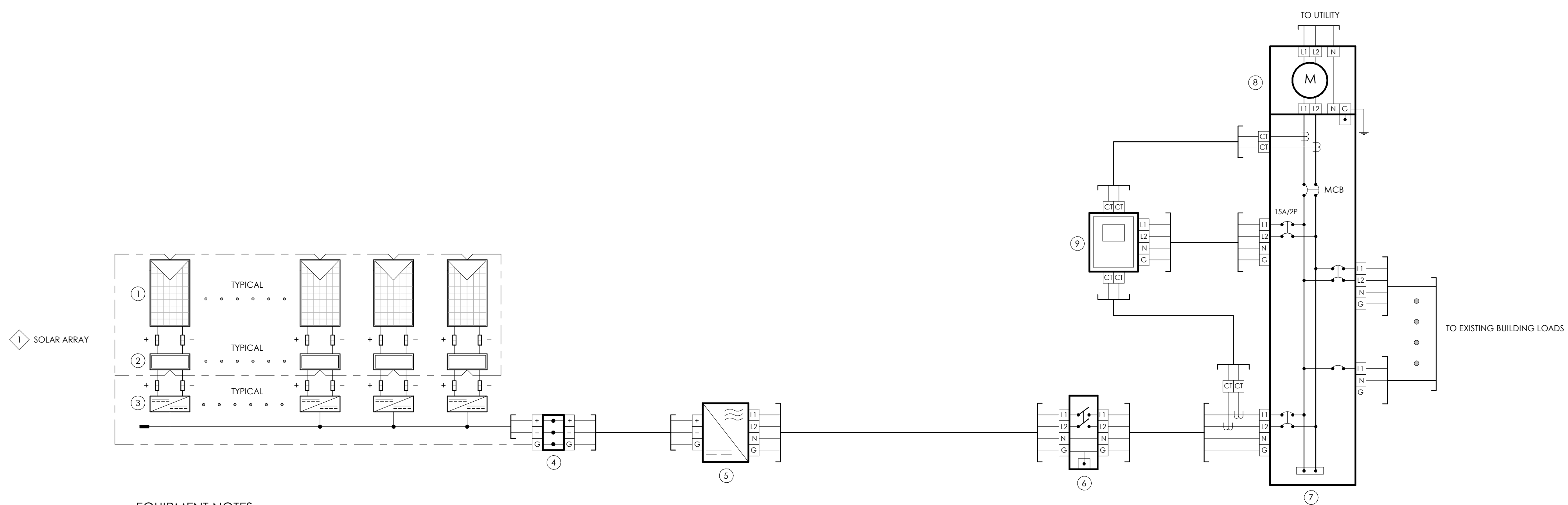


**SIMPLBOX SAMPLE DRAWINGS  
 ELECTRICAL DIAGRAMS**



- EQUIPMENT NOTES**
- ① SOLAR MODULE
  - ② SIMPLBOX MICROSTORAGE MODULE  
LiFePO<sub>4</sub>, 0.5 - 1.5 KWH, NEMA-3R  
 ENABLED WITH WI-FI COMMUNICATIONS
  - ③ POWER OPTIMIZER
  - ④ JUNCTION BOX
  - ⑤ SOLAR INVERTER
  - ⑥ AC DISCONNECT (AS REQUIRED)
  - ⑦ EXISTING MAIN PANEL  
240/120 VAC, 3W, 1Φ
  - ⑧ EXISTING UTILITY METER
  - ⑨ SIMPLMETER  
ADVANCED REAL-TIME POWER METERING DEVICE  
 ENABLED WITH WI-FI COMMUNICATIONS

**GENERAL NOTES**

① SOLAR ARRAYS CAN BE CONFIGURED USING MICROINVERTER AND/OR POWER OPTIMIZER SOLAR INVERTER SYSTEMS. POWER OPTIMIZER CONFIGURATION SHOWN.

PLAN SET: SB-R181311  
 DATE: 11.13.18  
 PAPER SIZE: ARCH D  
 DRAWN BY:  
 CHECK BY:

REVISIONS		
REV #	DATE	ISSUE
1.0	11.13.18	PRELIM.

ELECTRICAL ENGINEER ON RECORD

STRUCTURAL ENGINEER ON RECORD

STAMPED APPROVALS

SHEET CONTENT  
**POWER OPTIMIZERS  
 240/120 VAC SERVICE**

SCALE: NTS  
 SHEET NUMBER